

**STATE ROUTE 20 OMEGA CURVES  
SAFETY AND OPERATION  
IMPROVEMENT PROJECT  
03-2H62U4  
CALIFORNIA DEPARTMENT OF  
TRANSPORTATION**

**JEFF JOHNSON  
RESIDENT ENGINEER  
CALTRANS**





# **PROJECT NEED AND PURPOSE**

## **PURPOSE**

- The purpose of this project is to improve traffic operations and safety by reducing the number and severity of collisions.

## **NEED**

- These two segments of roadway experienced a total of 39 collisions in a recent 3-year period (January 1, 2015, to December 31, 2017), including 19 collisions involving injuries.
- Accident rate is higher than the statewide average for a similar type facility.



# **PROJECT DESCRIPTION**

- Construct two 12-foot lanes and 8-foot shoulders on both sides
- Improve horizontal and vertical curves
- Improve clear recovery zone
- Reconstruct roadway connections
- Construct drainage systems and remove/rehabilitate existing drainage systems
- Add Left-Turn Pockets at Conservation Camp Road and Washington Road



# PROJECT COST AND TIME

\$32 million – Low Bidder – Granite  
Construction

240 Working Days (250 Days Plant  
Establishment)





# PROJECT SCHEDULE

PROJECT 55% COMPLETE TO  
DATE (66% BY TIME)





# INDEX OF PLANS

SHEET  
No.

DESCRIPTION

- 1 TITLE AND LOCATION MAP
- 2-17 TYPICAL CROSS SECTIONS
- 18 KEY MAP AND LINE INDEX
- 19-41 LAYOUTS
- 42-56 PROFILE AND SUPERELEVATION DIAGRAM
- 57-105 CONSTRUCTION DETAILS
- 106-198 DRAINAGE PLANS, PROFILES, DETAILS, AND QUANTITIES
- 199-207 UTILITY PLANS
- 208-210 CONSTRUCTION AREA SIGNS
- 211 MOTORIST INFORMATION PLAN
- 212-282 STAGE CONSTRUCTION AND TRAFFIC PLANS
- 283 STAFF CONSTRUCTION AND TRAFFIC HANDLING QUANTITIES
- 284-308 PAVEMENT DELINEATION AND SIGN PLANS, DETAILS, AND QUANTITIES
- 309-314 SIGN DETAILS AND QUANTITIES
- 315-318 SUMMARY OF QUANTITIES
- 319-374 LANDSCAPE PLANS
- 375-380 ELECTRICAL PLANS
- 381-408 REVISED STANDARD PLANS
- 409-413 VENDOR DRAWINGS

THE STANDARD PLANS LIST APPLICABLE  
TO THIS CONTRACT IS INCLUDED IN THE  
NOTICE TO BIDDERS AND SPECIAL PROVISIONS BOOK.

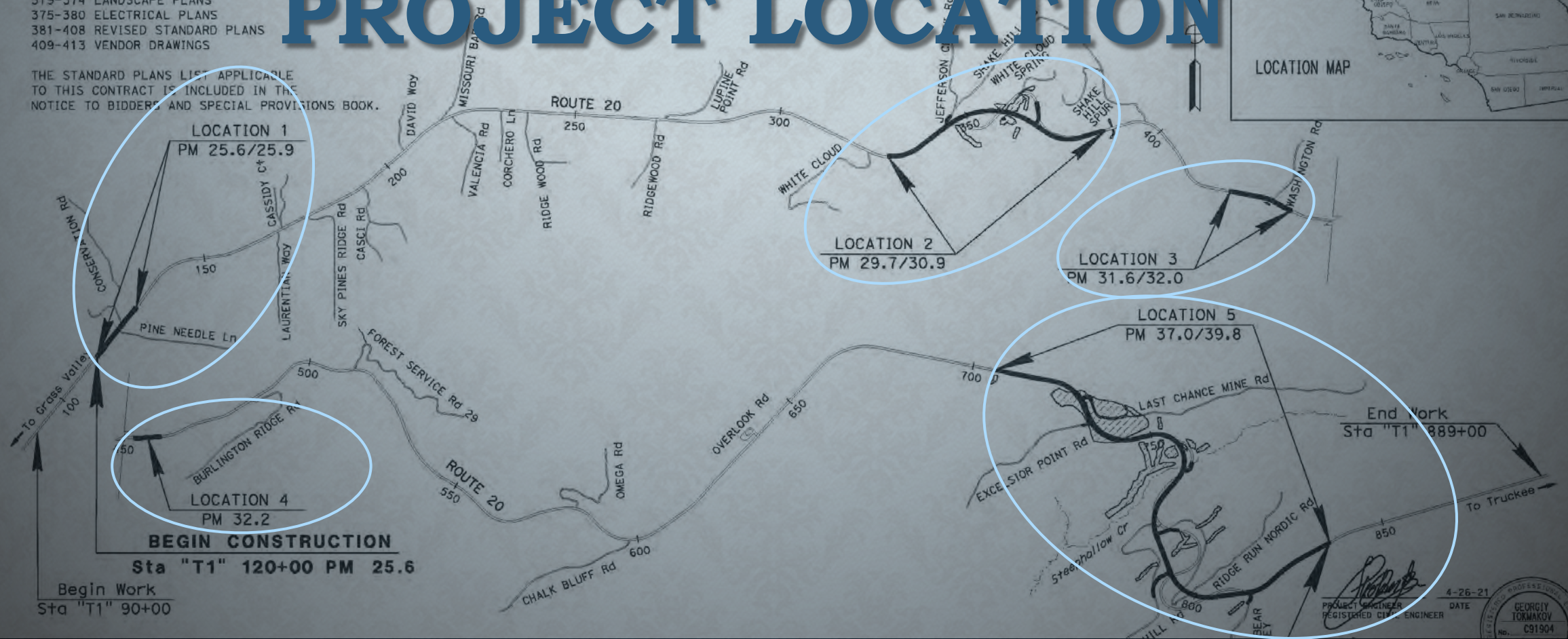
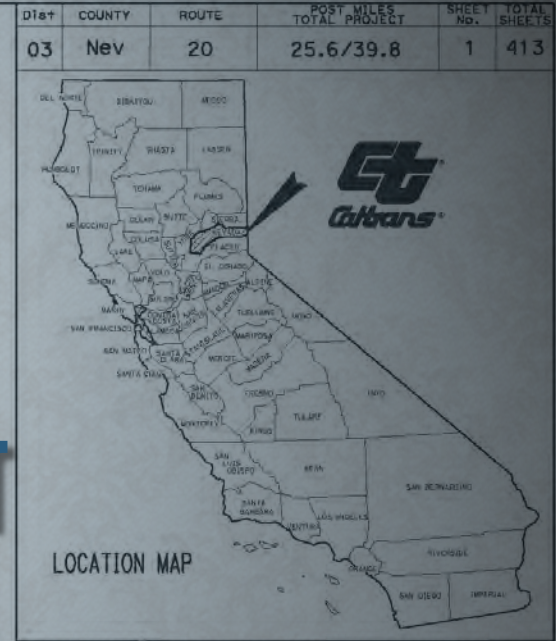
## STATE OF CALIFORNIA DEPARTMENT OF TRANSPORTATION

ACNH-P020(196)E

### PROJECT PLANS FOR CONSTRUCTION ON STATE HIGHWAY

IN NEVADA COUNTY NEAR OMEGA  
AT VARIOUS LOCATIONS FROM 0.2 MILE WEST OF  
CONSERVATION ROAD (WASHINGTON RIDGE ROAD)  
TO 1.2 MILES WEST OF  
ZEIBRIGHT ROAD

# PROJECT LOCATION



PROJECT MANAGER  
SAM VANDELL

4-26-21  
DATE  
PROJECT ENGINEER  
REGISTERED CIVIL ENGINEER  
GEORGIY TOMKOV  
NO. C91904



# PROJECT PHOTOS

OMEGA PHOTOS



# PROJECT PHOTOS

by Johnson, Jeff D@DOT



LOCATIONS 1 & 3





State Hwy 20



Oct 31, 2022 at 1:54:01 PM





# LOCATION 2 – WHITE CLOUD CURVE REALIGNMENT















May 13, 2022 at 11:02:51 AM  
+39.322813,-120.833389









Sep 16, 2022 at 10:12:32 AM









Oct 31, 2022 at 1:45:03 PM  
25761-25859 CA-20  
Nevada City CA 95959  
United States  
Tahoe National Forest





Jul 7, 2023 at 1:50:09 PM









Jul 7, 2023 at 2:00:00 PM









LOCATION 5 – LOWELL HILL CURVE  
REALIGNMENT

5' X 5' BOX FILL



May 19, 2022 at 7:48:42 AM

CA-20

Nevada City CA 95959

United States

Tahoe National Forest





Jun 10, 2022 at 9:13:22 AM  
+39.313053,-120.716366





Oct 11, 2022 at 2:18:08 PM





Nevada City, CA 95959  
United States  
Tahoe National Forest





Nevada City, CA 95959  
United States  
Tahoe National Forest





Oct 24, 2022 at 9:03:59 AM

CA-20

Nevada City CA 95959

United States

Tahoe National Forest





LOCATION 5 – LOWELL HILL CURVE  
REALIGNMENT

**72" CONCRETE PIPE FILL**







10200-10214 Lowell Hill Rd  
Nevada City CA 95959























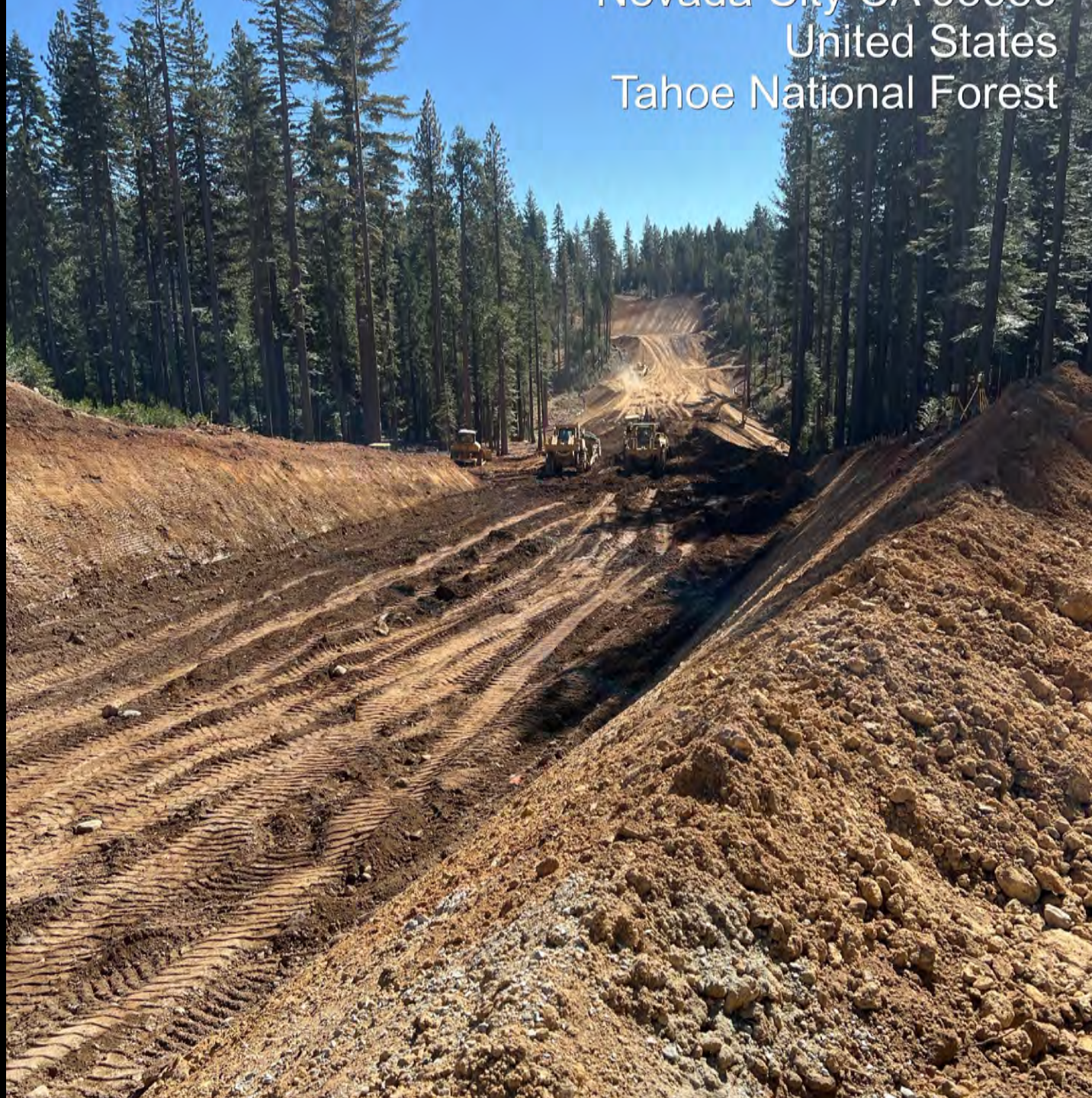


Oct 3, 2022 at 12:35:31 PM  
36399-36537 CA-20  
Nevada City CA 95959  
United States  
Tahoe National Forest





Nevada City, CA 95959  
United States  
Tahoe National Forest





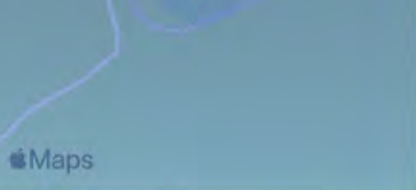
LOCATION 5 – LOWELL HILL CURVE  
REALIGNMENT

BEAR VALLEY CUT











Aug 25, 2022 at 3:37:02 PM  
+39.305095,-120.717409  
Tahoe National Forest  
Nevada County





Sep 28, 2022 at 4:01:48 PM  
36400-36538 CA-20  
Nevada City CA 95959  
United States  
Tahoe National Forest





2017 W  
36400-36538 CA-20  
Nevada City CA 95959





Nevada City, CA 95959  
United States  
Tahoe National Forest





Nevada City, CA 95959  
United States  
Tahoe National Forest

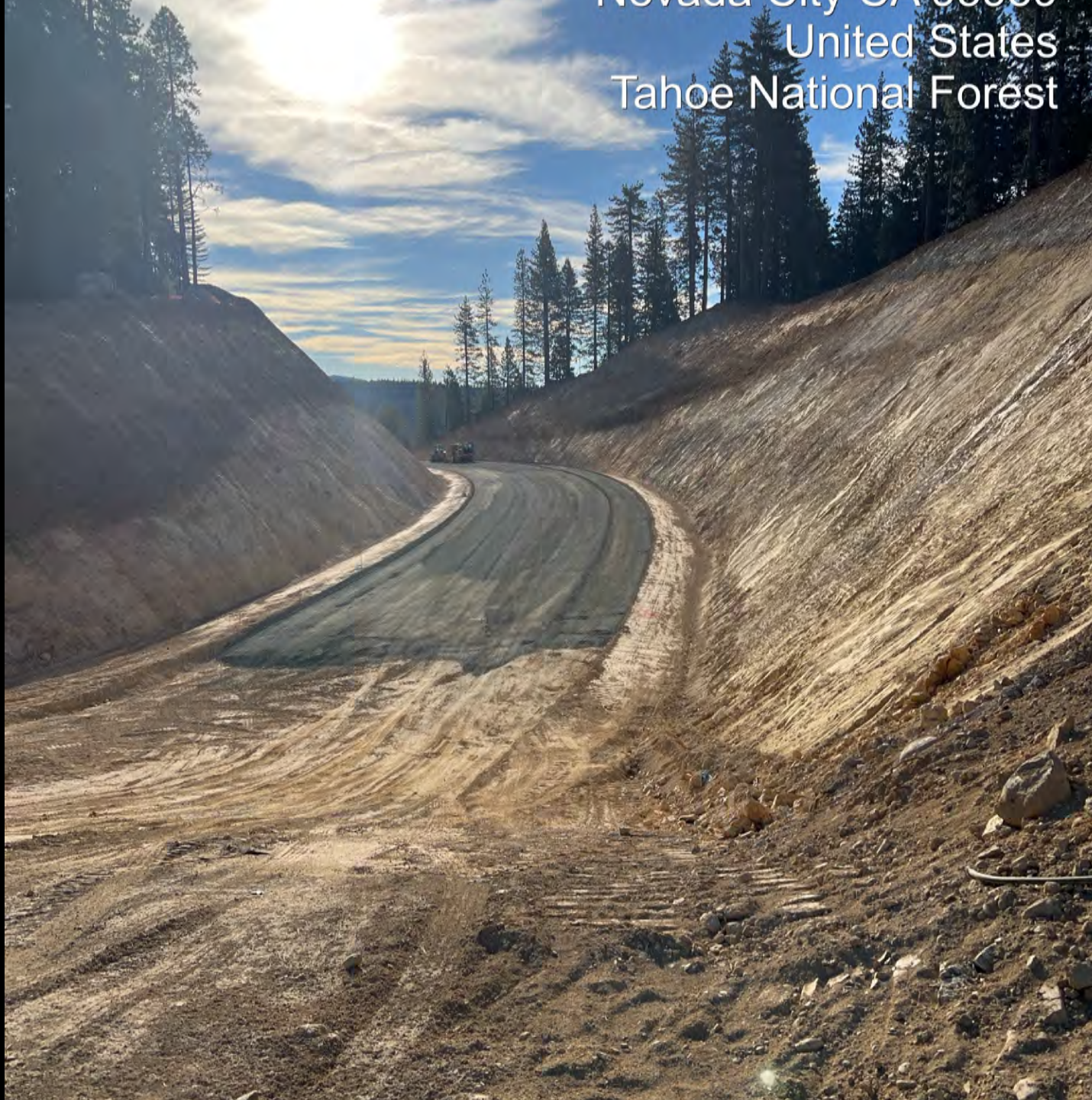








Nevada City, CA 95959  
United States  
Tahoe National Forest





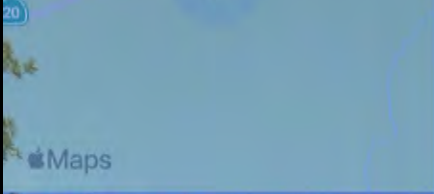
LOCATION 5 – LOWELL HILL CURVE  
REALIGNMENT

BEAR VALLEY FILL



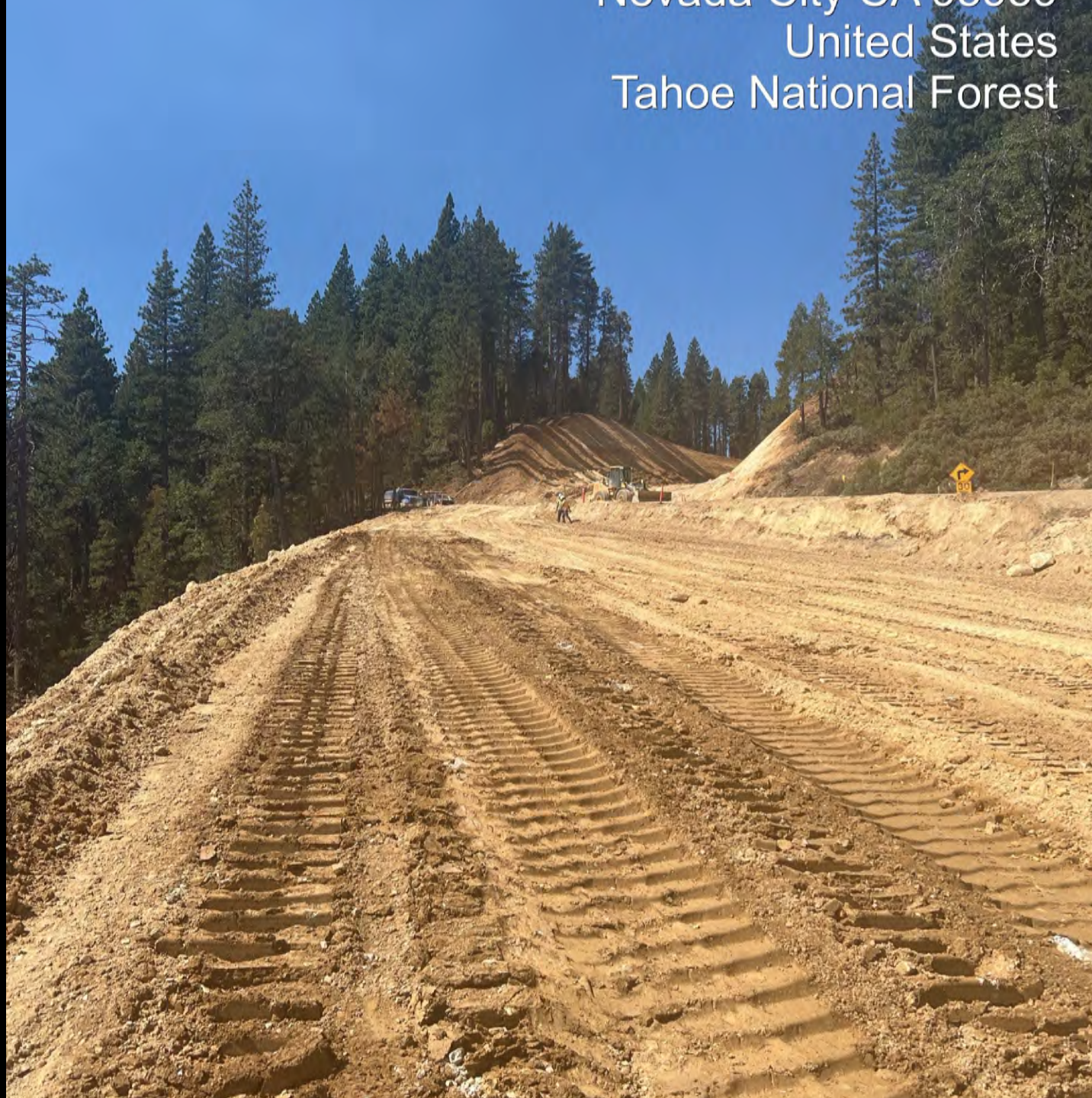








Nevada City, CA 95959  
United States  
Tahoe National Forest





Sep 28, 2022 at 4:03:48 PM  
36399-36537 CA-20  
Nevada City CA 95959  
United States  
Tahoe National Forest





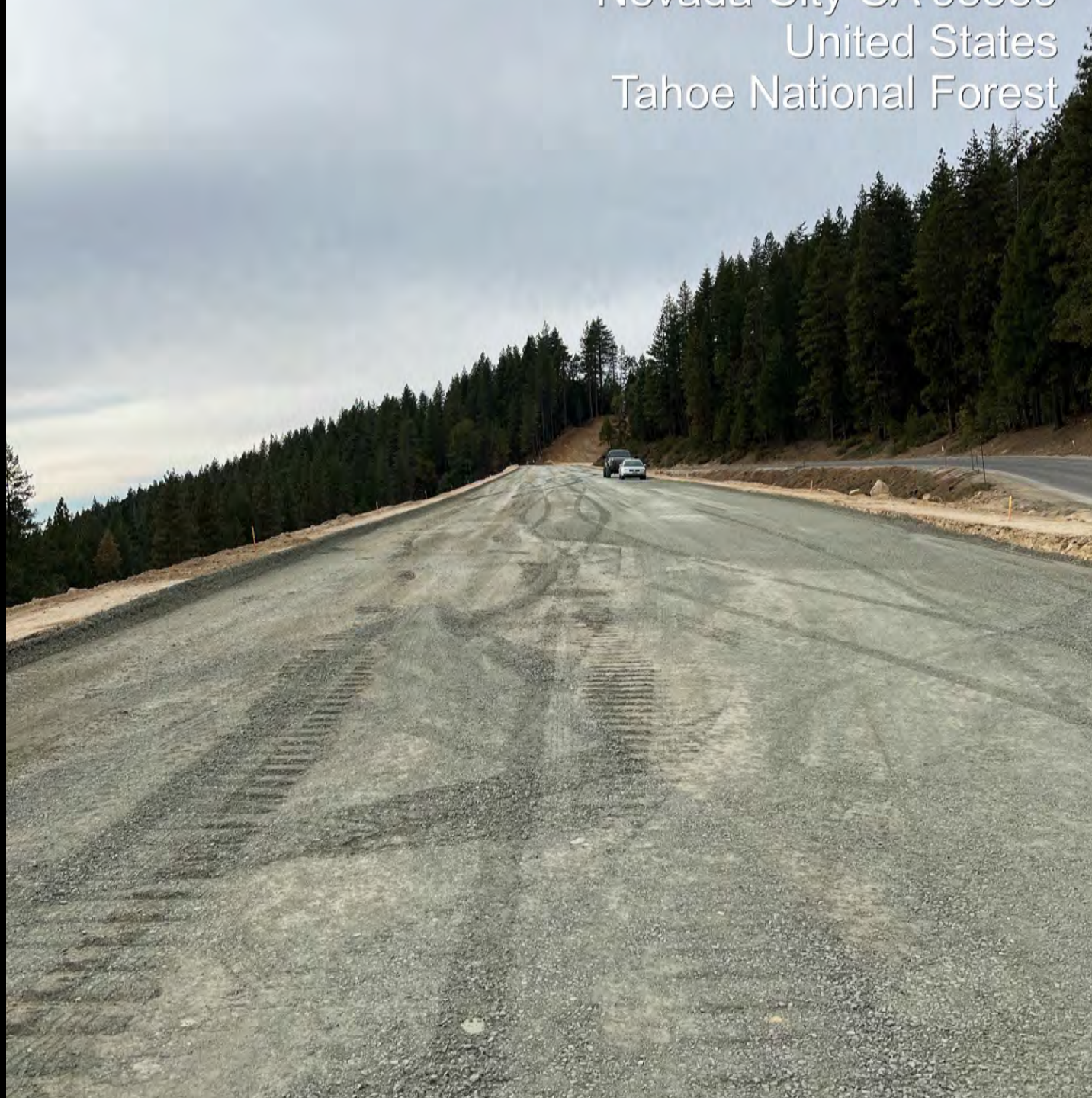








Nevada City 94933000  
United States  
Tahoe National Forest





## **MILESTONE EVENTS**

- 35 Day One-way Reversing Traffic Control (Lowell Hill) – Started July 10, 2023
- 5-Day Full Closure (White Cloud) - Anticipated Mid-September 2023
- 5-Day Full Closure (Lowell Hill) - Anticipated Mid/Late-September 2023



**QUESTIONS?**

