



Nevada County Regional Transportation Plan

Draft Regional Transportation Plan: Commission Meeting

May 17, 2017

Rod Brown
Dave Robinson

FEHR  PEERS

RTP Process Overview

Data Collection

Project List Development

Public Outreach

Financial Plan Development

Summarize Regional Issues,
Goals, Objectives, & Policies

Draft Plan

Performance Measure
Development

Final Plan

FEHR  PEERS

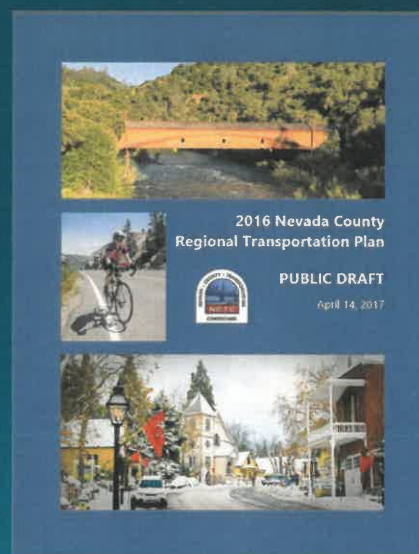
RTP Elements

- Introduction
 - Regional setting, demographics, trends
 - Public participation
- Policy Element
 - Relationship to other local and state plans
 - Goals, objectives, performance measures, targets, and policies
- Action Element
 - Transportation system component discussion
 - Short- and long-term actions
- Financial Element
 - Revenue forecast
 - Financially constrained funding scenario

FEHR + PEERS

2016 RTP is update of 2010 RTP

- Adds performance measures and targets
- Updates background information
- New public outreach
- Update projects, costs, and finances



FEHR + PEERS

What are Performance Measures?

- Provide quantifiable evidence of the consequences of decision or actions
- Predict, evaluate, and monitor the extent to which transportation systems accomplish public objectives
- Can be modeled (e.g. VMT) or measured (e.g. traffic volume)
- Can be quantitative (e.g. V/C Ratio) or qualitative (historic character)



Image Source: www.dreamstime.com

FEHR + PEERS

Goals are different from objectives which are different from...

Goal: A vision toward which effort is directed; general and timeless

Objective: Intermediate step to achieve a goal; realistic and quantifiable

Performance Measure: Quantifiable evidence of progress

Target: Specific number that the plan aims to achieve

Policy: Specific statement that guides decision making; planning guideline

FEHR + PEERS

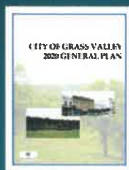
Many inputs for goals and objectives

Plans: Current RTP, General Plans, State Plans, Bike and Ped, Transit

Local Data and Trends: Demographics, employment, transportation

Public Outreach: Workshops, Online Survey

Local Planning Staff: County, Cities, NCTC



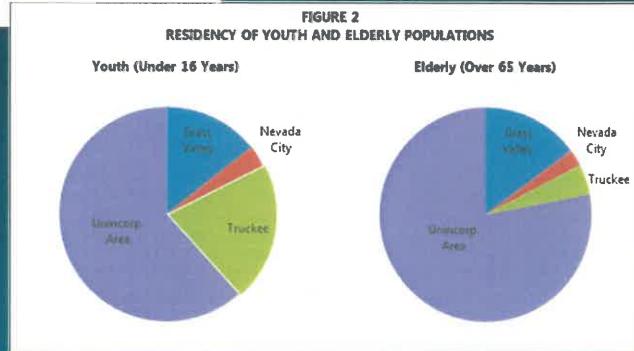
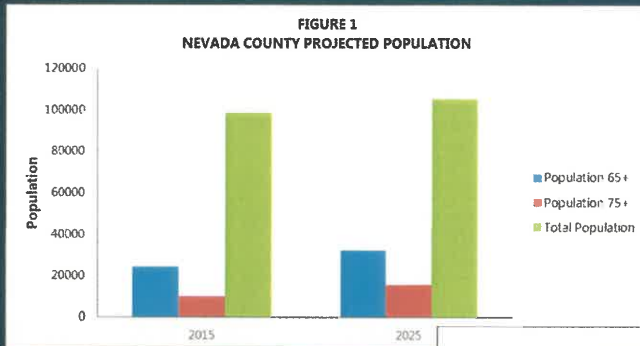
FEHR + PEERS

Data Collection



FEHR + PEERS

Trends: Population and demographics



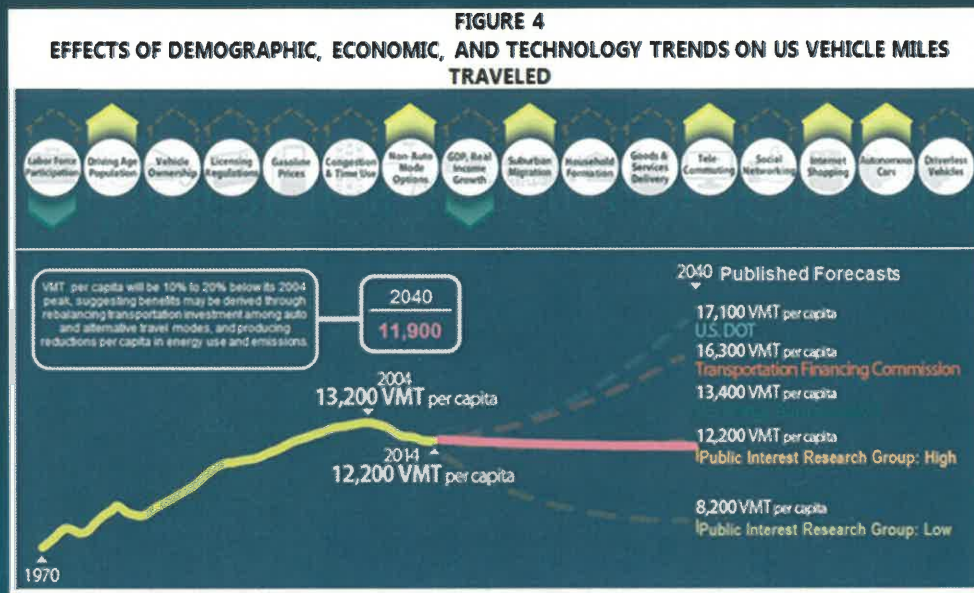
FEHR + PEERS

Trends: Roadway operations (2012 vs. 2035)



FEHR + PEERS

Trends: New technologies and social changes



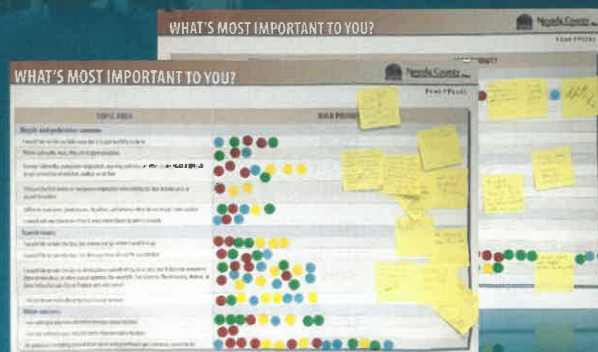
FEHR + PEERS

Public Outreach: Summer 2015



- Grass Valley Thursday Night Market
- Truckee Thursdays
- Nevada City Farmers Market

- Priority Votes - 575
- Comment Cards - 31
- Online Survey Responses - 29

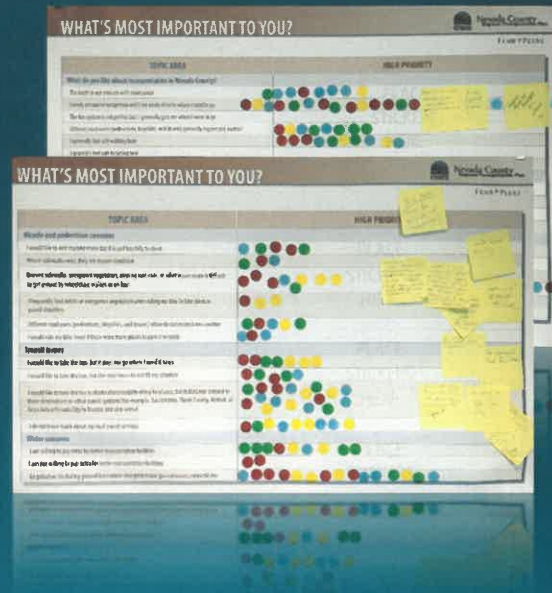


FEHR + PEERS

Top Concerns

- Current Transit Destinations
- Air Pollution
- Safety when biking
- Incomplete sidewalk coverage

Concerns were incorporated into goals and objectives



FEHR PEERS

An example: Performance Measure and Target

Goal: Provide for the safe and efficient movement of all people, goods, and services on the roadway network

Objective: Improve safety

Performance Measure: Number of collisions by mode

Targets: Zero pedestrian, bicycle, and fatal collisions
2%/year decrease in injury and total collisions

Current: (2013) All modes: 922 Total, 15 Fatalities, 478 Injuries
13 Ped, 11 Bike
All decreasing vs. 2012

RS

An example: Policy

Goal: Provide for the safe and efficient movement of all people, goods, and services on the roadway network.

Objective: Improve safety.

Performance Measure: Number of collisions by mode

Policy: Coordinate with Caltrans and the SR 49 Stakeholders Committee to ensure development, implementation, and funding of projects within the SR 49 Corridor System Management Plan (CSMP) that improve safety and operations.

FEHR + PEERS

Goal 1.0

Provide for the safe and efficient movement of all people, goods, and services on the roadway network.

Number	Objective	Performance Measures	Intended Direction	Target	Current Measure and Trend
1.0	PROVIDE FOR THE SAFE AND EFFICIENT MOVEMENT OF ALL PEOPLE, GOODS, AND SERVICES ON THE ROADWAY NETWORK.				
1.A	Improve safety	Number of collisions by mode	↓	0 pedestrian, bicycle, and fatal collisions 2%/year decrease in injury and total collisions	922 Total 13 Pedestrian 11 Bike 15 Fatalities 478 Injuries (2013) All decreasing vs. 2012 ¹
1.B	Maintain levels of service adopted by local jurisdictions	Peak hour level of service	↑ if below target — if at target	Varies by road and jurisdiction, but generally D	Western Co 2012 model generally meets D with a few exceptions (E Main St, SR 49 GV to Combie, SR 20 GV to Rough and Ready Hwy) Forecasted to worsen in some areas by 2035 (See Figure 12 and Figure 13)

PEERS

Goal 2.0

Create and maintain a comprehensive, multi-modal transportation system to serve the needs of the County.

Number	Objective	Performance Measures	Intended Direction	Target	Current Measure and Trend
2.0	CREATE AND MAINTAIN A COMPREHENSIVE, MULTI-MODAL TRANSPORTATION SYSTEM TO SERVE THE NEEDS OF THE COUNTY.				
2.A	Reduce dependence on the automobile by emphasizing transit, ridesharing, working from home, and pedestrian and bicycle travel	Journey to work mode share	↓ Drive alone ↑ Other modes	71% Drive alone 29% Other modes	76% drive alone 24% other modes Trend is flat vs. 2000 (See Table 13)
2.B	Create bicycle, pedestrian, and transit networks that provide access and connections between key destinations including schools and commercial centers	Percent of planned sidewalk network completed	↑	2% increase/year	69% as of 2011 ²
		Percent of planned bicycle network (shared use paths, bike lanes, and bike routes) completed	↑	2% increase/year	Shared use paths 42% Bike lanes 44% Bike routes 12% as of 2015 ³
		Number of transit boardings	↑	2% increase/year	252,567 FY 2014/2015 (See Table 38)
2.C	Support safe aviation access at our airports	Landings as a share of capacity	↓ if near or at capacity	< 100% on days other than holidays or fire operations	Nevada County Airport: 10% annual (est. 2015) but near capacity during some fire ops ⁴ Truckee Airport: 12% annual (2012), but near capacity holiday periods ⁵
		Accidents and incidents	↓	0 accidents or incidents	Nevada County Airport: 2 (2014) Truckee Airport: 3 (2014) Increase from 2013 (0/2) ⁶

Goal 3.0: Preserve Quality of Life

Reduce adverse impacts on the natural, social, cultural, and historical environment and the quality of life.

Number	Objective	Performance Measures	Intended Direction	Target	Current Measure and Trend
3.0	REDUCE ADVERSE IMPACTS ON THE NATURAL, SOCIAL, CULTURAL, AND HISTORICAL ENVIRONMENT AND THE QUALITY OF LIFE.				
3.A	All projects in the RTP are consistent with management and conservation strategies of regional resources contained in the General Plans	Check each project against applicable general plan policies	↑	100%	100% ⁷
3.B	Reduce regional emissions of criteria pollutants and greenhouse gases	Greenhouse gas emissions	↓	2.5% reduction/yr	Estimates: 2010: 3,850 tons CO ₂ /day, 320 tons CH ₄ /day 2030: 5,250 tons CO ₂ /day, 120 tons CH ₄ /day ⁸
		Ozone precursors	↓	2.5% reduction/yr	Reactive organic gases: 2,789 tons/day (2015), 1,736 tons/day (2035) 2.43% reduction/yr estimated through 2035 ⁹

Goal 4.0: Invest Funds Wisely

Develop an economically sustainable transportation system.

Number	Objective	Performance Measures	Intended Direction	Target	Current Measure and Trend
4.0	DEVELOP AN ECONOMICALLY SUSTAINABLE TRANSPORTATION SYSTEM.				
4.A	Minimize the capital and operating costs of all travel modes	Pavement Condition Index (PCI)	↑	71	71 in 2014 Slight decrease from 2012 (72) ¹⁰
		Sidewalk condition (good to poor, qualitative) by %	↑	[see discussion]	[see discussion]
4.B	Balance farebox recovery with transit service	Number of transit boardings	↑	2% increase per year	252,567 FY 2014/2015

Next steps in the RTP update

Get input on the draft RTP

Complete environmental review (in progress)

Finalize the RTP