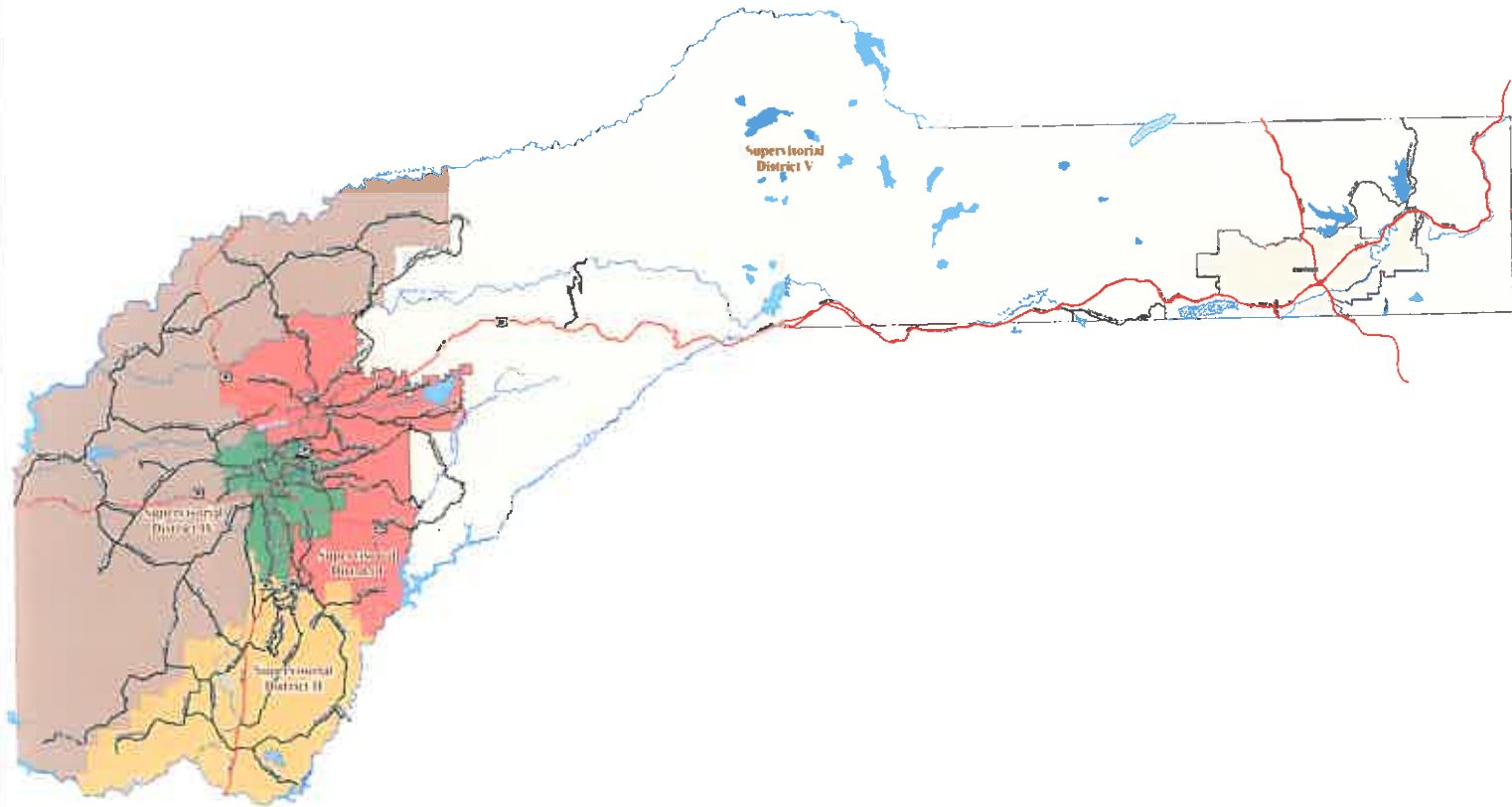


Supervisory Districts

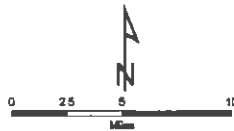


Legend

- Highway
- Major Roads
- City Limits
- Nevada County Boundary
- Large Lakes
- Major Rivers

Supervisory Districts

- I /
- II /
- III /
- IV /
- V /



Created by Nevada County GIS Division
 All geographical information is the property of the County of Nevada.



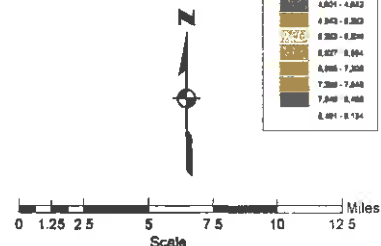
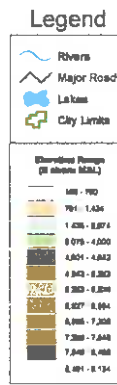
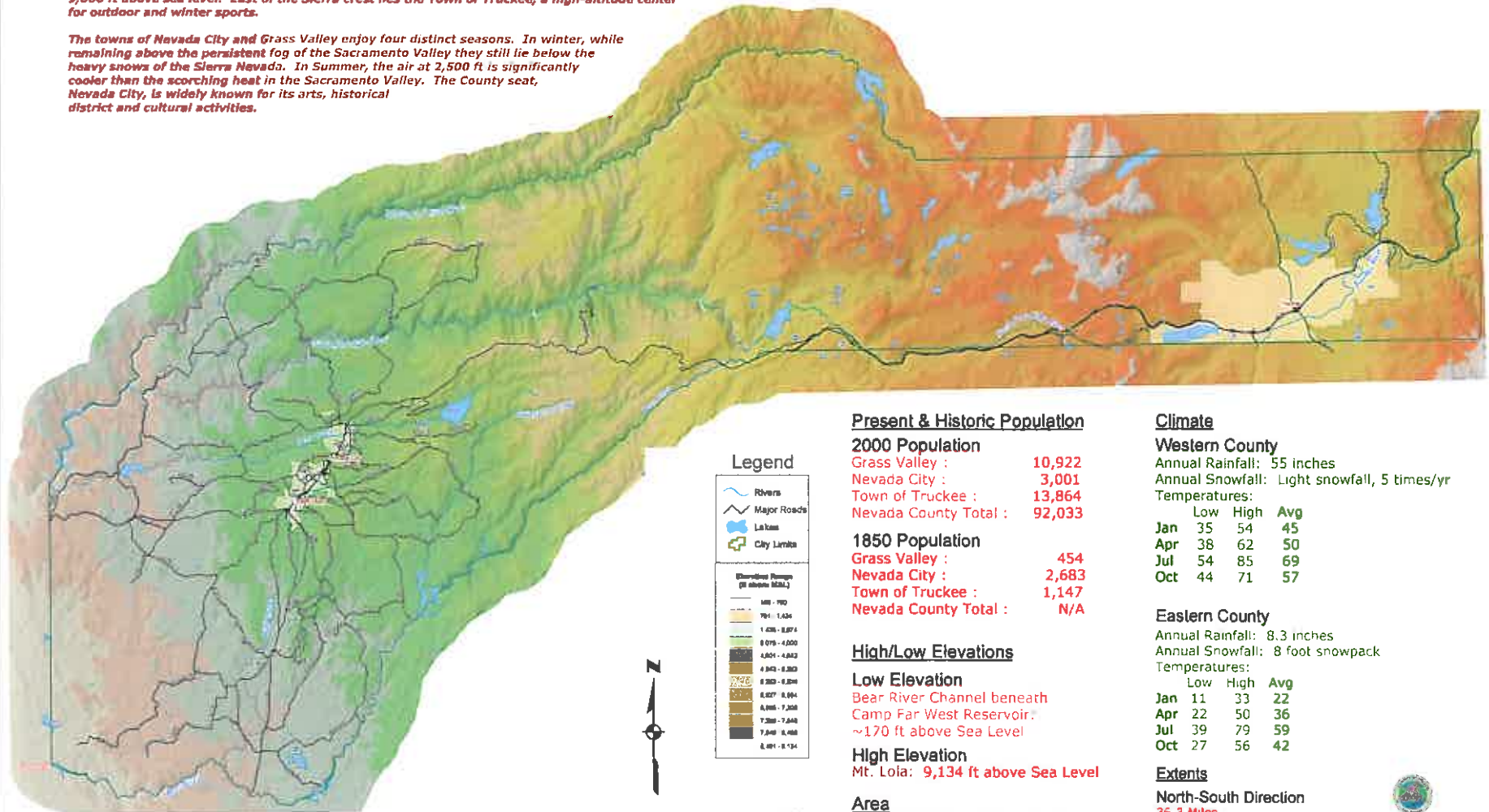
This document and the data herein are the property of the County of Nevada. It is provided for informational purposes only. The County of Nevada makes no warranty, express or implied, for the information contained herein. The County of Nevada is not responsible for any errors or omissions in this document. The County of Nevada is not responsible for any damages, including but not limited to, direct, indirect, or consequential damages, arising from the use of this document. The County of Nevada is not responsible for any damages, including but not limited to, direct, indirect, or consequential damages, arising from the use of this document.

Nevada County, California

Nevada County is located in the heart of Northern California's Gold Rush Country and the Sierra Nevada Mountains. The county features a wide variety of landscapes, flora and weather. The western edge of Nevada County rises from the Sacramento Valley starting at several hundred feet above sea level and is covered by oaks and grasslands. In the foothills rising to the east lie the historic towns of Nevada City and Grass Valley. These two communities were founded in the early days of California's 1850's Gold Rush and are situated among the oak and pine woodlands at an altitude of about 2,500 ft.

Further east lie large tracts of pine forest and wilderness and the crest of the Sierra Nevada at over 9,000 ft above sea level. East of the Sierra crest lies the Town of Truckee, a high-altitude center for outdoor and winter sports.

The towns of Nevada City and Grass Valley enjoy four distinct seasons. In winter, while remaining above the persistent fog of the Sacramento Valley they still lie below the heavy snows of the Sierra Nevada. In Summer, the air at 2,500 ft is significantly cooler than the scorching heat in the Sacramento Valley. The County seat, Nevada City, is widely known for its arts, historical district and cultural activities.



Present & Historic Population

2000 Population	
Grass Valley :	10,922
Nevada City :	3,001
Town of Truckee :	13,864
Nevada County Total :	92,033
1850 Population	
Grass Valley :	454
Nevada City :	2,683
Town of Truckee :	1,147
Nevada County Total :	N/A

High/Low Elevations

Low Elevation
Bear River Channel beneath
Camp Far West Reservoir :
~170 ft above Sea Level
High Elevation
Mt. Lola : 9,134 ft above Sea Level

Area
974.3 Square Miles / 623,569.7 Acres

Climate

Western County
Annual Rainfall: 55 inches
Annual Snowfall: Light snowfall, 5 times/yr
Temperatures:
Low High Avg
Jan 35 54 45
Apr 38 62 50
Jul 54 85 69
Oct 44 71 57

Eastern County

Annual Rainfall: 8.3 inches
Annual Snowfall: 8 foot snowpack
Temperatures:
Low High Avg
Jan 11 33 22
Apr 22 50 36
Jul 39 79 59
Oct 27 56 42

Extents

North-South Direction
36.3 Miles
East-West Direction
58.3 Miles

Created by Nevada County GIS Design W2307
 New-Caledonia, 10/20/2007
 Visit our website at www.orygonnevadacounty.com